

FIRST LIGHT



Nature always bats last. -Anonymous

EPIGRAPH

*Previous Page: Axonometric from Variation III of
Unsung: An Architectural Allegory on the Govern-
ment Hill Wireless Station. 2018.*

2



fifty shades of light: "first light"

Vol. i; MMXVIII - Anchorage, AK

"first light" is the first edition of an annual monogram of work from claroscuro and Ć. Wm Rer. This portfolio highlights five significant projects produced in the last two years. The projects illustrate the faculty of the firm and designer through the breadth of design abilities and the depth of design exploration.

-Ćon, MMXIX

CLAROSCURO, LLC
WWW.CLARO-SCURO.COM

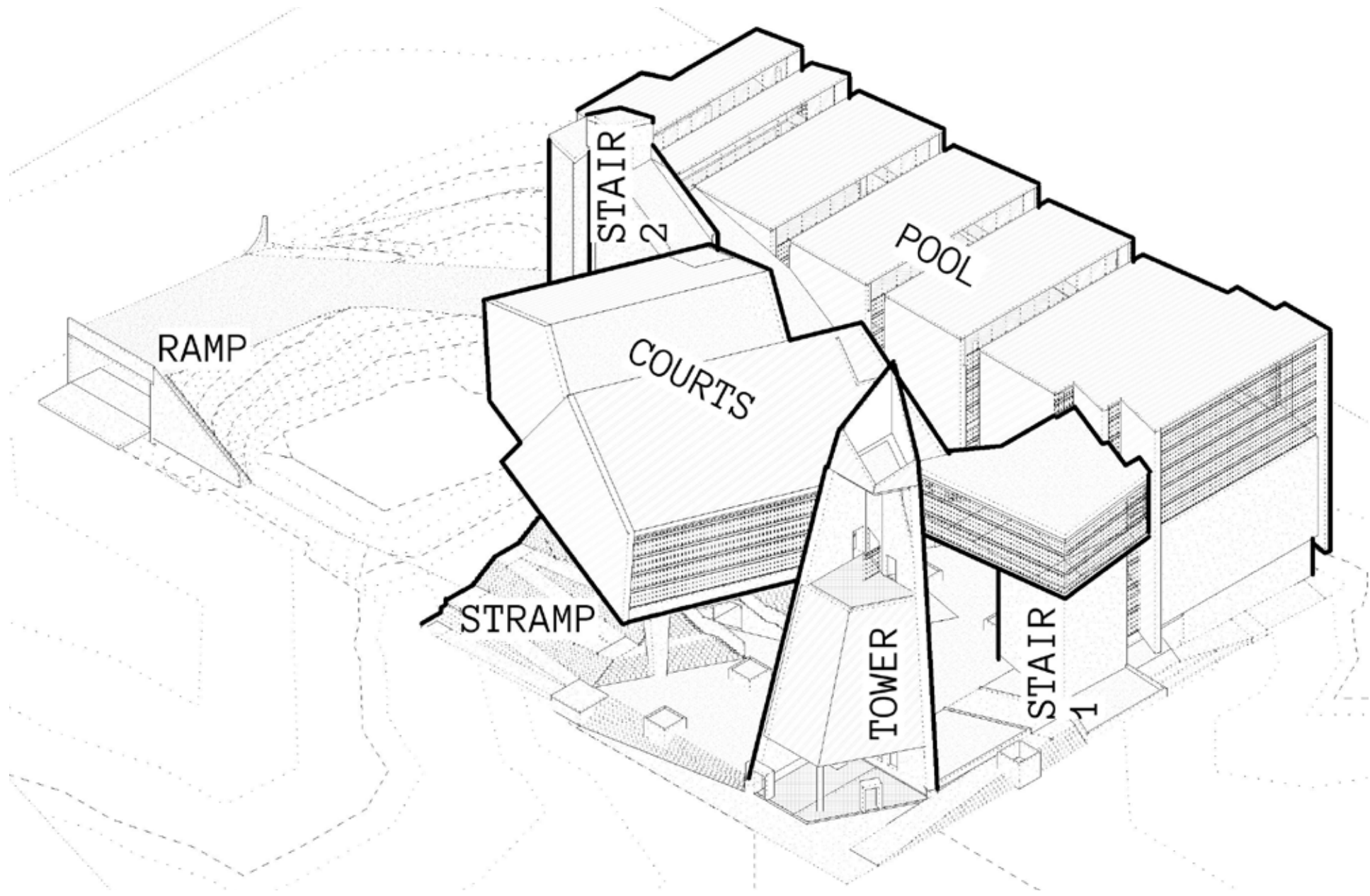
CONNOR WM SCHER, M. ARCH.
8640 LEEPER CIR
ANCHORAGE, AK 99504

+1.907.952.6105

CREDITS



3



CONTENTS

Contents:

UITS - - - - 6

UNSUNG - - - - 8

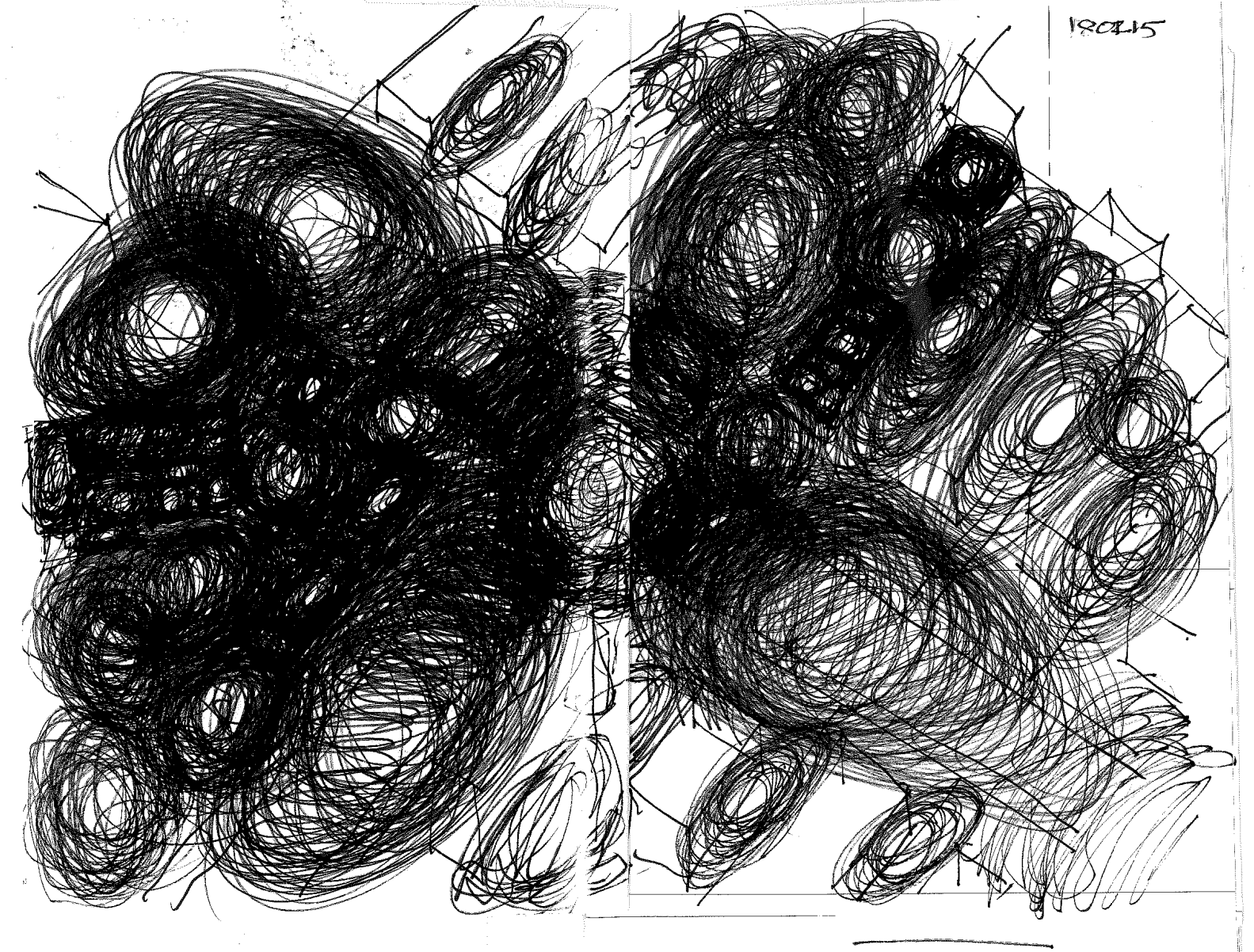
Shell ADU - - - - 12

Armadillo - - - - 14

Anchorage 2040 Land Use Plan - 16



4



What appears to be continuous space is really a concentration of acoustic nodes, between which are acoustic thresholds. This all exists in reality duplicated in a surreality which contains the same nodes and thresholds, except these are merely shadows of their real counterparts. While the body moves through reality, the spirit moves through the surreality, each step mirrored in the other realm, beyond the acoustic horizon. Resonances of sounds from every action and reaction define each acoustic node. Physical barriers and surrounding geometries reflect and refract the sound waves in each node, causing constructive and destructive interference that separate the nodes; these areas are acoustic thresholds. Similarly, the memories of actions occurring before and after the present, the spirits of those that made those memories and the echoes of their sounds, resonate in the corresponding surreal acoustic node. Nodes and thresholds give rise to a work, becoming solids and spaces, walls and apertures. A work begins as a diagram synthesizing the memories, current sounds, and future actions of the site and its users. Design continues through the realization of acoustic nodes, places of action and reaction. The voids and solids of a work exist in a sound web of varying density - of shades of light.-Çon

PHILOSOPHY

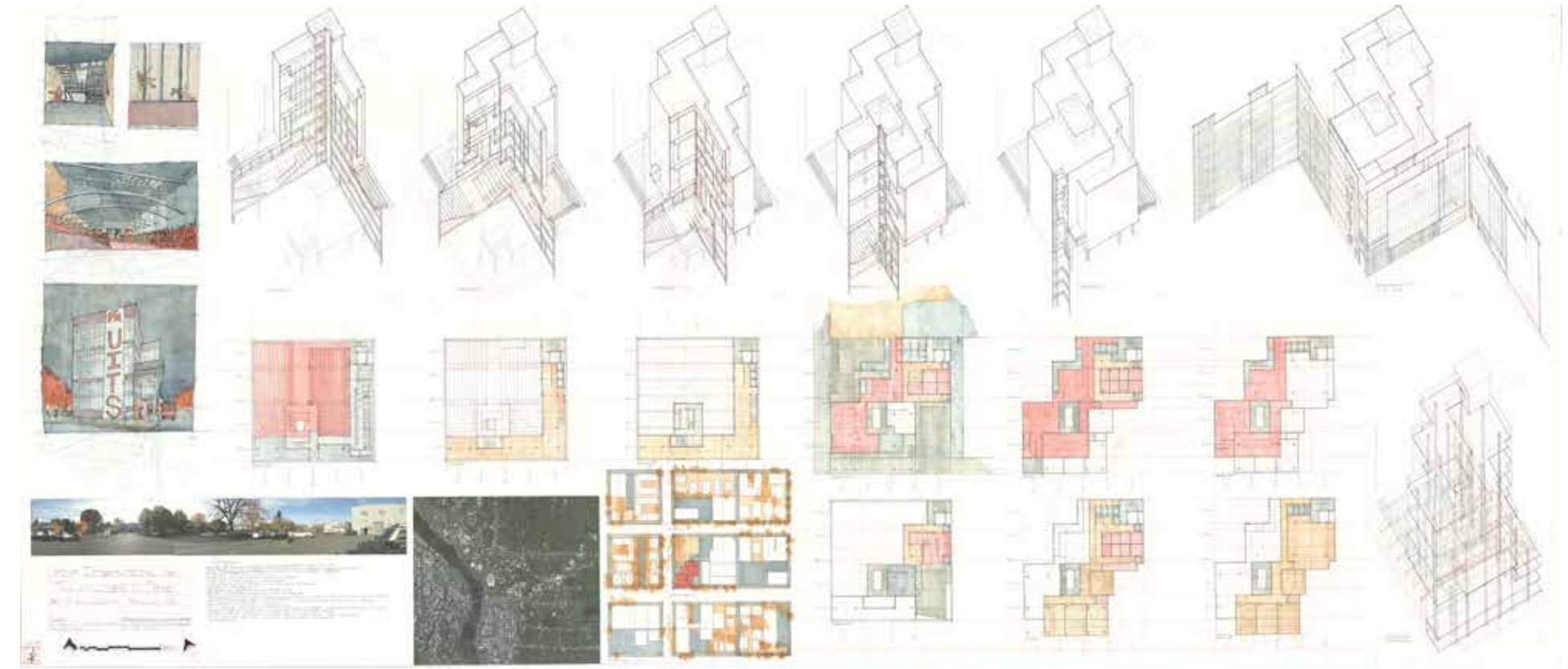
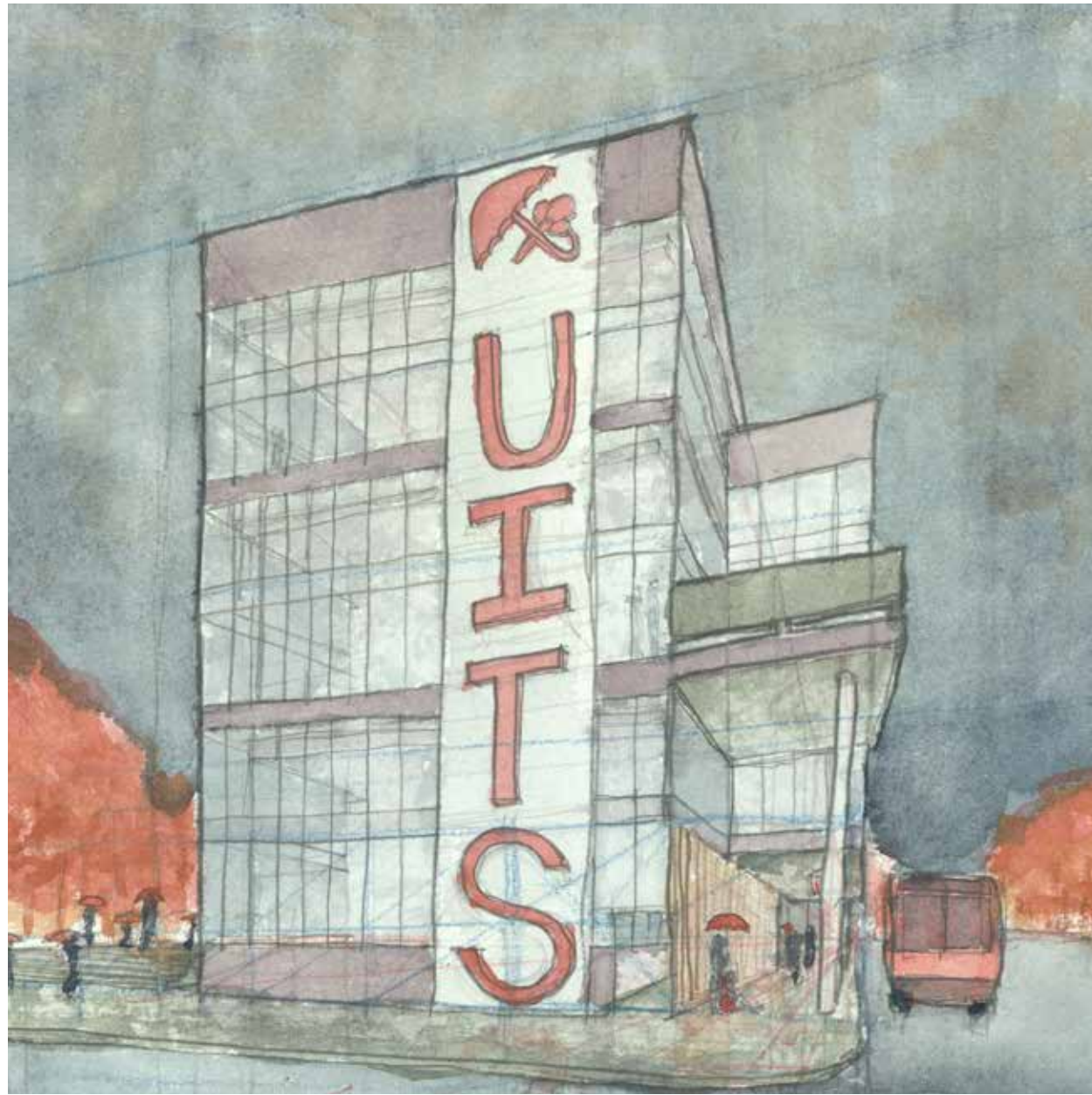
Current Page: Acoustic Node Sketch. Unsung: An Architectural Allegory on the Government Hill Wireless Station. 2018.



5

UNION INTERNATIONALE DES TRAVAILLERS DU SEXE

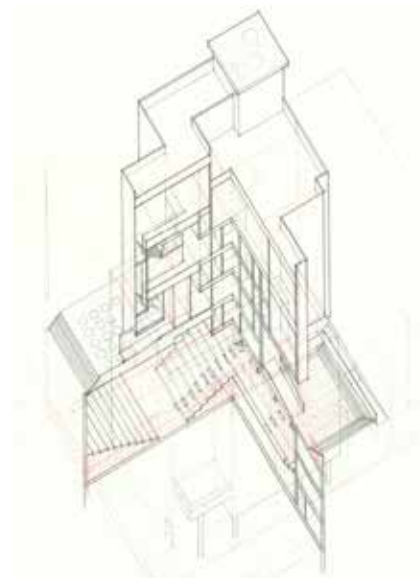
The Union Internationale des Travailleurs du Sexe, a fictional workers union based on the real International Union of Sex Workers – who advocate for greater equity, legal protection, and physical safety for sex workers – occupy this building in Northeast Portland. The design encourages interaction between sex workers and other members of the public in an attempt to normalize the profession. The program includes exclusive spaces for the union-members and the public, and some spaces where they can both inhabit. Such shared spaces are a health clinic – although the union and public check-in spaces are separate – a library and archives, plazas, a portico, a coffee bar, and an exhibit hall. Level changes and materials separate the specifically public and union spaces, but some areas are visible through gaps in the walls or transparency. The gazes of both the public and worker penetrate the spaces of the other, creating a panopticism that transposes power and control from the public to the worker. For example, the basement assembly hall is exclusively for the union members and the public can only view it from the library or plaza. The design aims to educate, protect, and empower both the public and sex workers.



**UITS
2016**

*Current Page Above: Exterior Perspective from UITS. 2016.
Current Page Below: Interior Perspective of Assembly Hall from UITS. 2016.*

6



**UITS
2016**

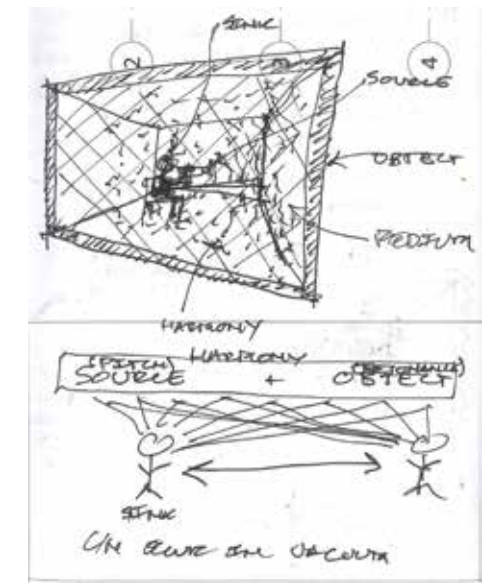
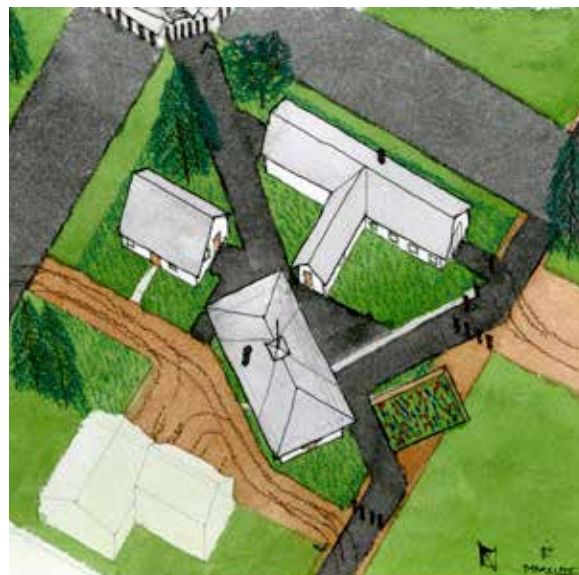
*Current Page Above: Presentation Board from UITS. 2016.
Current Page Below Left: Axonometric Section from UITS. 2016.
Current Page Below Right: Ground Floor Plan from UITS. 2016.*



7

UN Sung: AN ARCHITECTURAL ALLEGORY ON THE GOVERNMENT HILL WIRELESS STATION

Completed as a Masters Thesis, *Unsung* is an exploration into preservation techniques focused on intangible resources and the power of stories. Using the derelict Government Hill Wireless Station in Anchorage as a subject, the Thesis explores concepts of preservation rooted more in traditional methods of storytelling and metaphysical metamorphosis than the Secretary of Interior's Standards. Instead of countering those guidelines, *Unsung* incorporates the four methods – preservation, rehabilitation, restoration, and reconstruction – in creative, clever, and critical ways. The Thesis proposes constructing a path from Ship Creek to the site on Government Hill, and thence extending north and east to connect to Cairn Point and Mountain View. The street intersection becomes a sunken plaza for community conversation and interaction. At the site, the buildings become a space for storytelling and memory storage before they final decay, leaving concrete forms that recall the structures and store their memories. In the final variation, three elder care homes rise out of the ruins, facilitating the continued curation and celebration of the collective conscious. View *Unsung* at www.claro-scuro.com/writing.



UN Sung 2017-8

Current Page Above: Axonometric from Variation III of *Unsung*. 2018.
 Current Page Below Left: Axonometric from Variation I of *Unsung*. 2018.
 Current Page Below Right: Axonometric from Variation II of *Unsung*. 2018.



UN Sung 2017-8

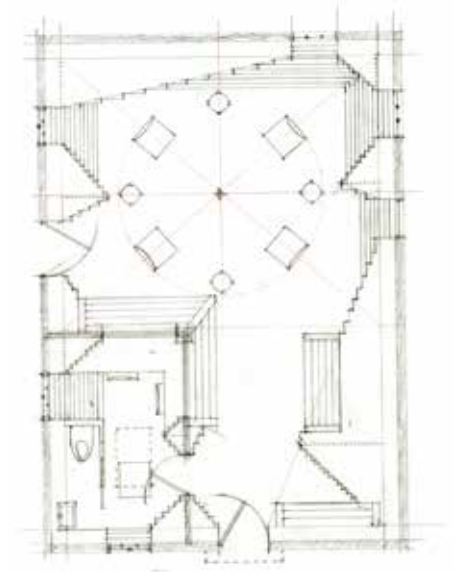
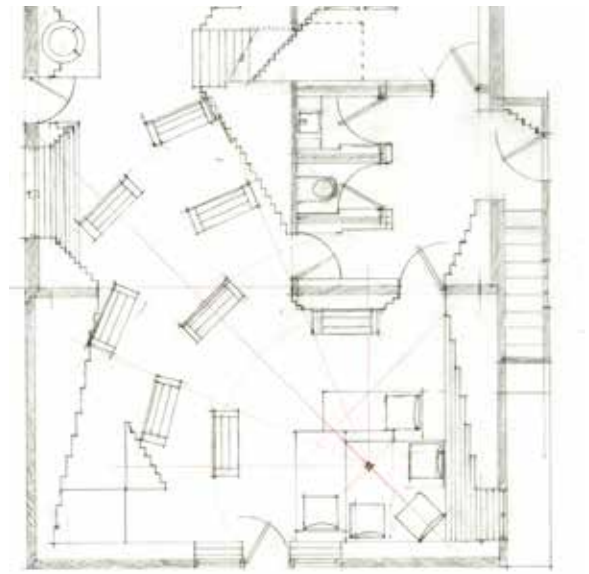
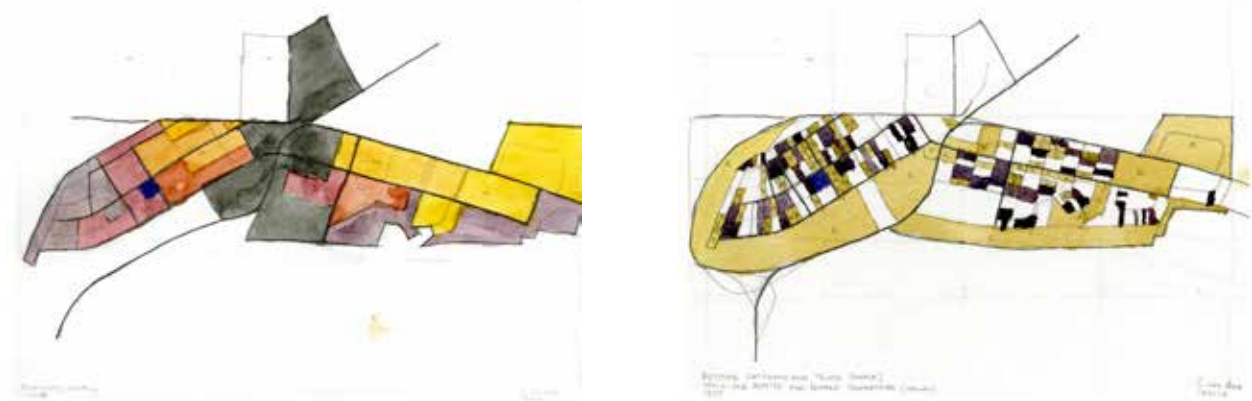
Current Page Left: Ground Floor Plan from Variation I of *Unsung*. 2018.
 Current Page Right Above: Colorized Photo of the Government Hill Wireless Station in 1917 from *Unsung*. 2018.
 Current Page Right Below: Harmony Between Person and Room Sketch from *Unsung*. 2018.





UNSUNG
2017-8

Current Page Above: Map of Land Control in Government Hill from *Unsung*, 2018.
 Current Page Below Left: Economic Distribution of Government Hill from *Unsung*, 2018.
 Current Page Below Right: Map of Seniors and Rentals in Government Hill from *Unsung*, 2018.



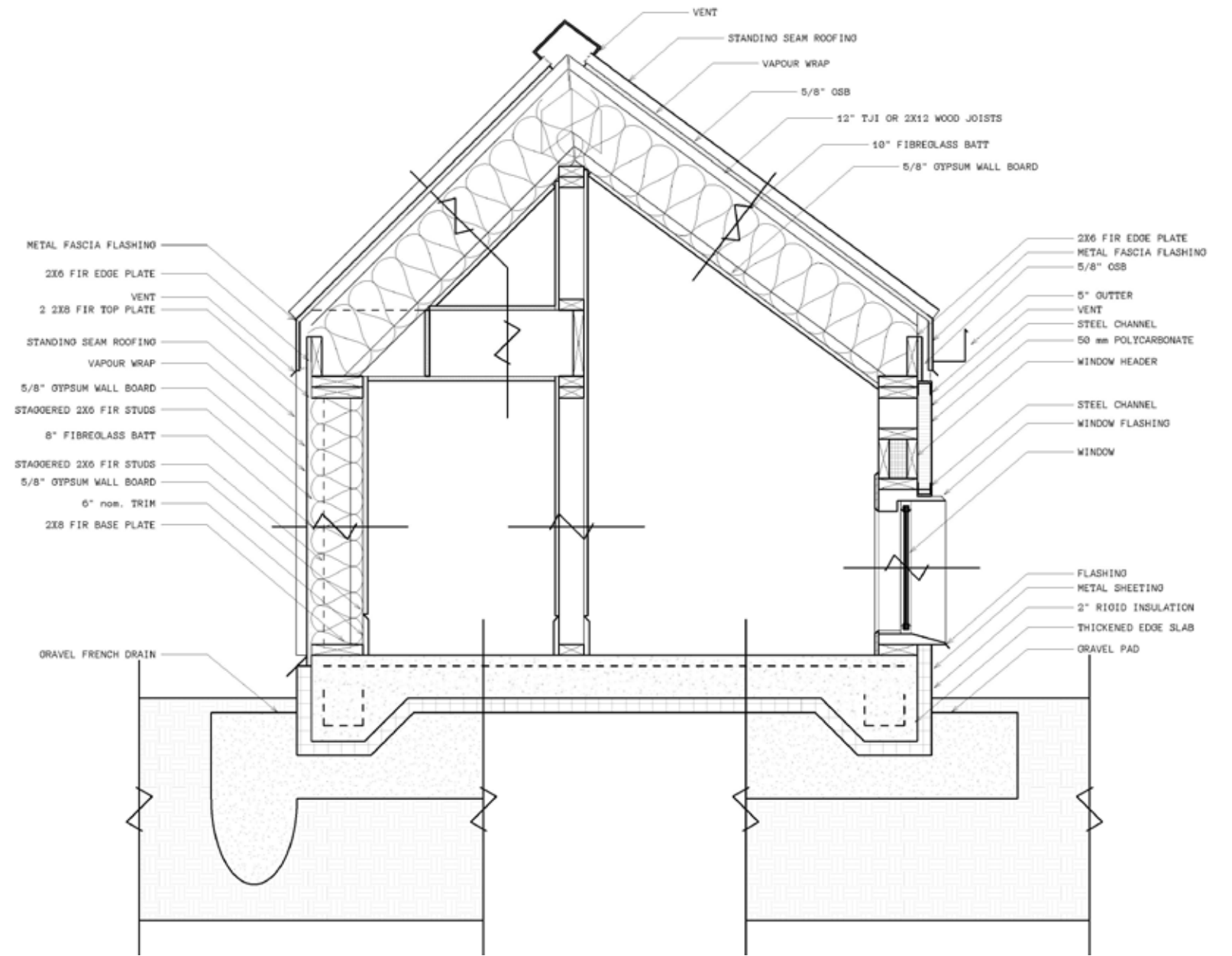
UNSUNG
2017-8

Current Page Left Above: Sketches from *Unsung*, 2018.
 Current Page Right Above and Below: Plans from Variation I of *Unsung*, 2018.
 Current Page Below Left and Right: Stations along the Trail from *Unsung*, 2018.



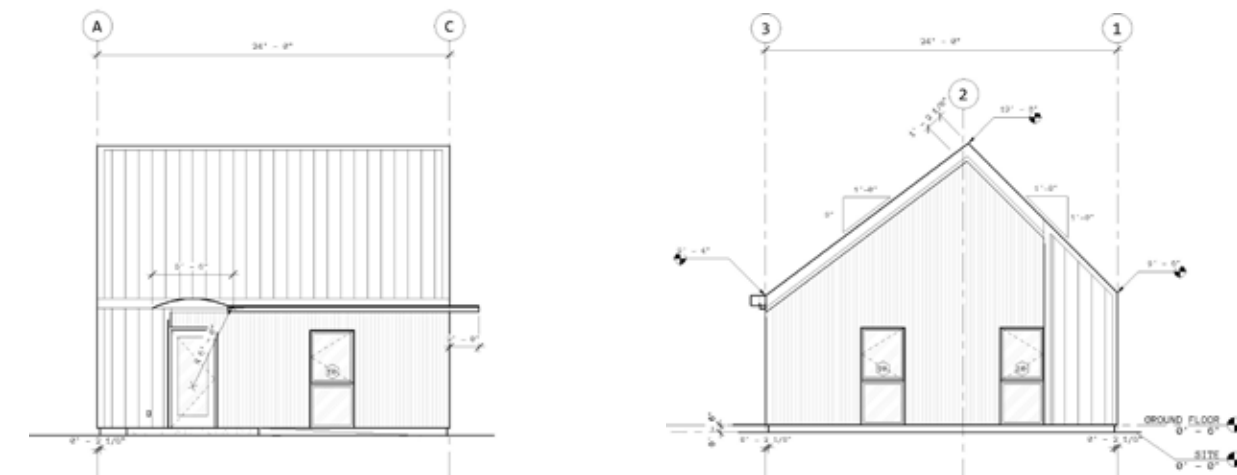
SHELL ADU

Conceived as an accessory dwelling unit for elderly residents, the small structure challenges contemporary methods of construction and dwelling. The project arose from a desire to provide affordable housing and decrease populating displacement through creating a program that matches homeowners with a designed and permit-ready ADU that fits their needs, budget, and site. The Portland State University School of Architecture design studio class charged with this task developed eight designs, from which five were selected for further development. Shell ADU was one of those five; Con had developed Shell ADU with another student Austin Zeitz, who did not continue in the second phase. Con joined the Center for Public Interest Design at PSU to develop the five designs into construction sets. Shell ADU is 576 sf, small enough to sit in any side or rear setback, according to local regulations. This challenged the design to have wall openings on only two walls. In order to provide maximum natural light, the building uses polycarbonate panels for the non-fire-rated walls. Extra insulation in the roof and solid walls help the building meet energy standards. Metal siding covers those surfaces. With only four rooms, the design is simple, and accommodates all ADA standards as well, making it an ideal home for aging with grace.



SHELL ADU 2016-PRESENT

Current Page Above: Presentation Plan from Shell ADU. 2018.
Current Page Below: Exterior Rendering from Shell ADU. 2018.



SHELL ADU 2016-PRESENT

Current Page Above: Detail Section from Shell ADU. 2018.
Current Page Below Left and Right: Elevations from Shell ADU. 2018.



ARMADILLO

This community resource center serves the changing neighborhood of Richmond on the frontier of Portland and Gresham, Oregon. The population in this neighborhood is becoming more ethnically diverse, as traditionally white residents age or move away. There are few community gathering or recreation places, very few restaurants, and no grocery stores. Armadillo provides the neighborhood with these spaces, as it incorporates a swimming pool, basketball and croquet courts, hydroponic growing operation and market, restaurant, cafe, playground, yoga studio, and radio station into its distinctive form. The project was part of the Comprehensive Design Studio in the PSU M. Arch. program that bridged the first and second years. In the first year, Con developed the design to Schematic Design phase, then worked on putting the design into Autodesk Revit over the summer. When the second year began, Con and the other students developed their projects further, considering the International Building Code, and in many cases the limitations of the design program and building materials. Each student created a construction set that detailed the structural, mechanical, plumbing, and fire suppression systems, the life safety considerations of the building, and the passive strategies incorporated in the design.

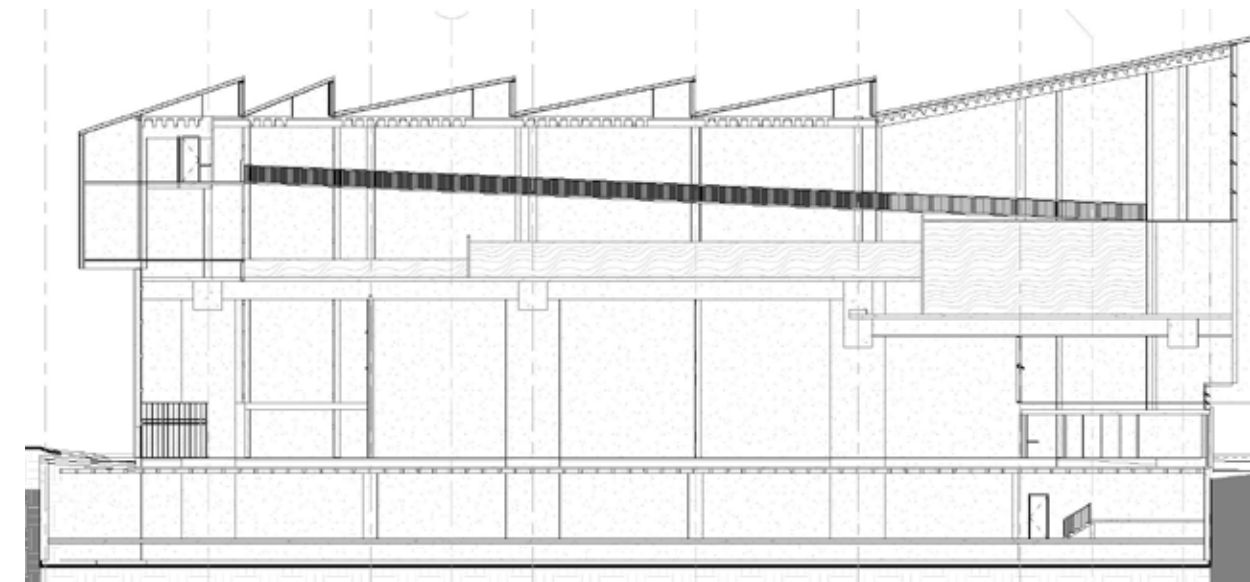
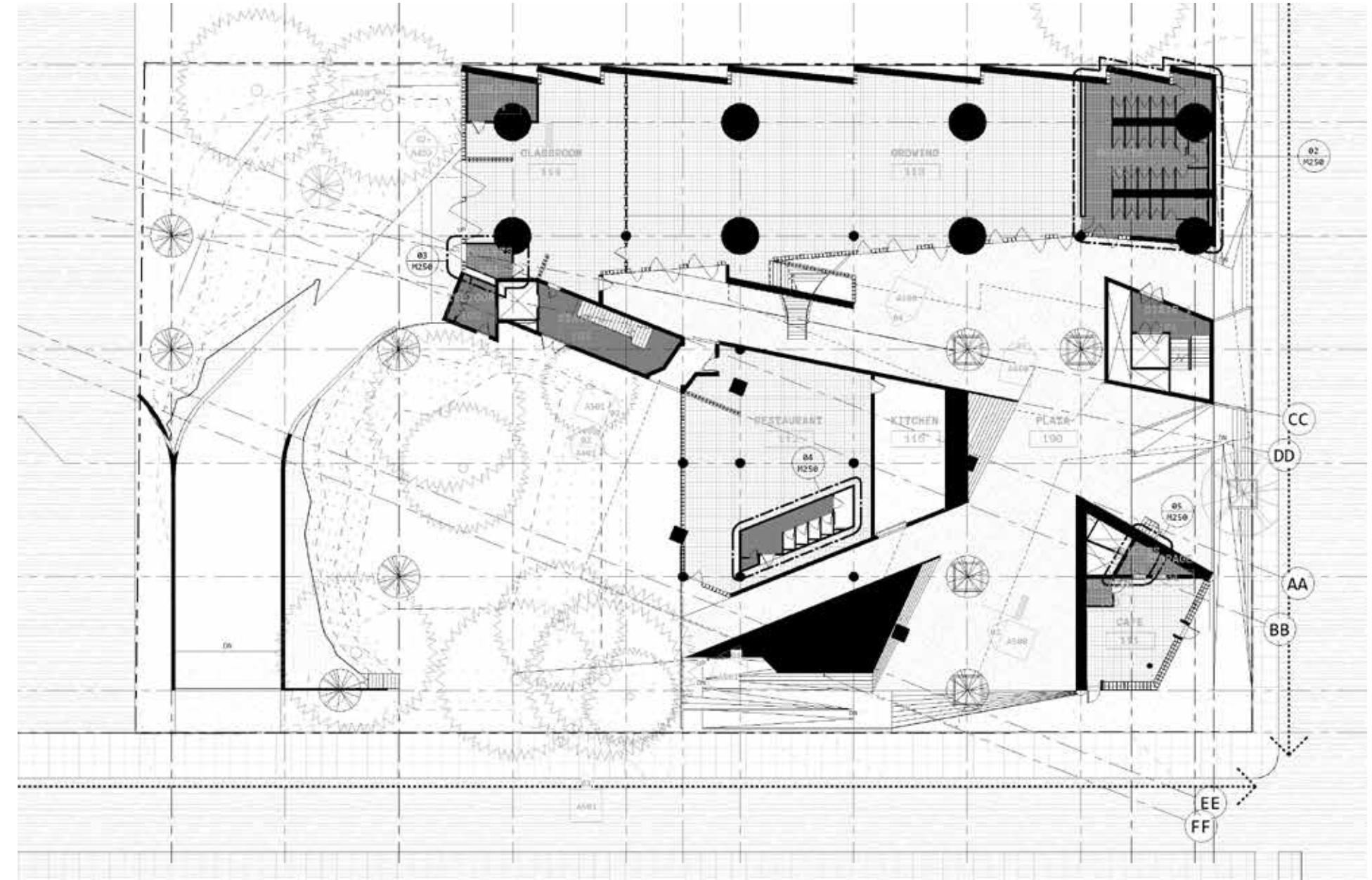


ARMADILLO 2017

Current Page Above: Exterior Isometric Rendering from Armadillo. 2017.
Current Page Below: Exterior Rendering from Armadillo. 2017.



14



ARMADILLO 2017

Current Page Above: Ground Floor Plan from Armadillo. 2017.
Current Page Below: Section through Pool, Hydroponic Grow Space, Recreation Studio Space, and Basement Parking from Armadillo. 2017.



15

FIRST LIGHT

